



**MAY 2025**

# 4-H Family News

Jackson County Connections



## Jackson County Fair Registration



**Fair Entry will open May 15<sup>th</sup> and close  
June 27<sup>th</sup> at 5:00 pm**

**\*\*This year still exhibits and livestock  
will have the same deadline of the last  
Friday in June\*\***



## Stay Connected

**\*Jackson County 4-H Facebook Page:**

<https://www.facebook.com/jacksoncounty4h>

**\*Jackson Co. 4-H Small Animal Assoc. Facebook Page:**

<https://www.facebook.com/JacksonCountySmallAnimal>

**\*Jackson County 4-H Livestock Assoc. Facebook Page:**

<https://www.facebook.com/JacksonCountyLargeAnimal>

**\*Jackson County Horse Council Facebook Group:**

<https://www.facebook.com/groups/232601997473213>

## CONTACT US

Hayley Wineland  
[winela11@msu.edu](mailto:winela11@msu.edu)  
4-H Program Coordinator

Jessica Waldron  
[waldro45@msu.edu](mailto:waldro45@msu.edu)  
4-H Program Assistant

Gerilyn Darnell  
[darnel37@msu.edu](mailto:darnel37@msu.edu)  
Support Staff

## PHONE & EMAIL:

(517) 788-4292

[msue.Jackson@county.msu.edu](mailto:msue.Jackson@county.msu.edu)

## WEBSITE:

<https://www.canr.msu.edu/jackson/4-h/>

Michigan State University Extension programs and materials are open to all without regard to race, color, national origin, gender, gender identity, religion, age, height, weight, disability, political beliefs, sexual orientation, marital status, family status or veteran status. Issued in furtherance of MSU Extension work, acts of May 8 and June 30, 1914, in cooperation with the U.S. Department of Agriculture. Quentin Tyler, Director, MSU Extension, East Lansing, MI 48824. This information is for educational purposes only. Reference to commercial products or trade names does not imply endorsement by MSU Extension or bias against those not mentioned.



# COUNTY CALENDAR OF EVENTS

## May Meetings

Tuesday May 6th 6:00pm  
Cloverbuds  
\*See Flyer

Monday May 12th 7:00pm  
Horse Council

Tuesday May 13th 7:00pm  
Small Animal Association

Thursday May 15th  
Fair Registration opens

Monday May 19th 6:00pm  
4-H Council

Wednesday May 21st 7:00pm  
Livestock Association

## June Meetings

Monday June 9th 7:00pm  
Horse Council

Sunday June 29th  
4-H Family Photo Day  
See Flyer

Tuesday June 3rd 6:00pm  
Cloverbuds  
See Flyer

Wednesday June 4th  
7:00pm

Showmanship from a  
Judges Perspective  
See Flyer

Friday June 27th 5:00pm  
Fair Registration closes



**MSU Extension Office**  
**1715 Lansing Ave Ste #257**  
**Jackson, MI 49202**



# Fairy & Theme Garden Workshop

**Calling all Jackson County 4-H'er's!**

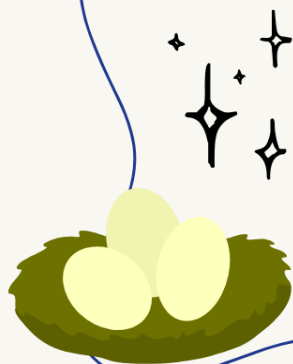
Come join us for a whimsical and creative workshop where you'll learn to make your very own miniature garden paradise, perfect for attracting fairies and other garden-loving creatures. We'll cover everything from picking the right plants to designing and putting together your fairy/theme garden, plus tips on how to take care of your plants. Come learn how to add a little magic to your home.

June 9<sup>th</sup> at 6pm  
MSU Extension Office  
1715 Lansing Ave. Ste #257  
Jackson, MI 49201

What to bring: A container (minimum of 6 inches in diameter) filled with soil. Feel free to be as creative as you want with your container, but please keep in mind that it can't weigh more than 25lbs to be entered into the fair.

Cost: \$10 for a variety of plants

Register by June 2<sup>nd</sup> 2025  
[waldro45@msu.edu](mailto:waldro45@msu.edu)



MSU Extension programs and materials are open to all without regard to race, color, national origin, gender, gender identity, religion, age, height, weight, disability, political beliefs, sexual orientation, marital status, family status or veteran status.

Michigan State University occupies the ancestral, traditional and contemporary lands of the Anishinaabeg – Three Fires Confederacy of Ojibwe, Odawa and Potawatomi peoples. In particular, the university resides on land ceded in the 1819 Treaty of Saginaw. We recognize Michigan's 12 federally recognized Native Nations, historic Indigenous communities in Michigan, Indigenous individuals and communities who live here now, and those who were forcibly removed from their homelands. In offering this land acknowledgement, we affirm Indigenous sovereignty, history and experiences.

# 4-H Family Photo Day

with Melissa Cozart Photography



FOR QUESTIONS, MESSAGE  
MELISSACOZARTPHOTO@GMAIL.COM



SAVE THE  
DATE  
JUNE 29TH

*\$50 Minimum  
Donation*

LOOK FOR REGISTRATION INFO  
CLOSER TO DATE

*All proceeds to benefit  
the Jackson County  
4-H Small Animal  
Association*

MSU Extension programs and materials are open to all without regard to race, color, national origin, gender, gender identity, religion, age, height, weight, disability, political beliefs, sexual orientation, marital status, family status or veteran status.

Michigan State University occupies the ancestral, traditional and contemporary lands of the Anishinaabeg – Three Fires Confederacy of Ojibwe, Odawa and Potawatomi peoples. In particular, the university resides on land ceded in the 1819 Treaty of Saginaw. We recognize Michigan's 12 federally recognized Native Nations, historic Indigenous communities in Michigan, Indigenous individuals and communities who live here now, and those who were forcibly removed from their homelands. In offering this land acknowledgement, we affirm Indigenous sovereignty, history and experiences.



For Jackson  
County 4-H  
Exhibitors

<https://msu.zoom.us/j/84461411111>



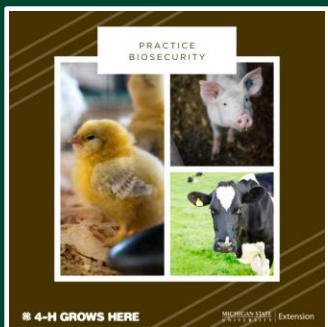
**MICHIGAN STATE UNIVERSITY** | Extension

Michigan State University occupies the ancestral, traditional and contemporary lands of the Anishinaabeg – Three Fires Confederacy of Ojibwe, Odawa and Potawatomi peoples. In particular, the university resides on land ceded in the 1819 Treaty of Saginaw. We recognize Michigan's 12 federally recognized Native Nations, historic Indigenous communities in Michigan, Indigenous individuals and communities who live here now, and those who were forcibly removed from their homelands. In offering this land acknowledgement, we affirm Indigenous sovereignty, history and experiences.



# STATEWIDE CALENDAR OF EVENTS

## Livestock and poultry owners encouraged remain vigilant about biosecurity



In recent years, highly pathogenic avian influenza (HPAI) has been detected in cattle, cats and poultry across the country and Michigan. Livestock and poultry owners are strongly encouraged to take proactive measures to defend against additional outbreaks in Michigan. Check out the following resources helpful information on biosecurity:

- [www.canr.msu.edu/fair-and-exhibition-animal-health/biosecurity](http://www.canr.msu.edu/fair-and-exhibition-animal-health/biosecurity)
- [www.canr.msu.edu/resources/biosecurity-for-dairy-and-beef-cattle-farms](http://www.canr.msu.edu/resources/biosecurity-for-dairy-and-beef-cattle-farms)
- [www.canr.msu.edu/news/small-scale-and-backyard-poultry-owners-should-remain-vigilant-to-protect-against-highly-pathogenic-avian-influenza](http://www.canr.msu.edu/news/small-scale-and-backyard-poultry-owners-should-remain-vigilant-to-protect-against-highly-pathogenic-avian-influenza)
- [www.canr.msu.edu/avian\\_influenza/](http://www.canr.msu.edu/avian_influenza/)

### May 7: Make the Most of Your Market Animal Project Webinar – Talk the Talk

Online

Effective communication is key to successfully selling livestock. This session covers tools and techniques to connect with buyers, convey product value, and empower youth with practical tips for impactful auctions and markets.

[www.canr.msu.edu/events/market-animal-project-webinars-may-7](http://www.canr.msu.edu/events/market-animal-project-webinars-may-7)

### May 7: Make the Most of Your Market Animal Project Webinar – Records to Riches

Online

Learn how to keep track of what you spend and earn so you can make smart choices for your project. Discover the power of record keeping and learn how to calculate your break-even point to make smarter decisions in livestock marketing.

[www.canr.msu.edu/events/market-animal-project-webinar5-14](http://www.canr.msu.edu/events/market-animal-project-webinar5-14)

### May 15: Michigan 4-H Volunteer Webinar Series: Fueling or Squashing the Rumor Mill

Online

This webinar will focus on supporting youth who face rumors about their projects and how to prevent the spread of misinformation.

12 p.m. session: [www.canr.msu.edu/events/michigan-4-h-volunteer-webinar-series-fueling-or-squashing-the-rumor-mill-noon](http://www.canr.msu.edu/events/michigan-4-h-volunteer-webinar-series-fueling-or-squashing-the-rumor-mill-noon)

7 p.m. session: [www.canr.msu.edu/events/michigan-4-h-volunteer-webinar-series-fueling-or-squashing-the-rumor-mill-7pm](http://www.canr.msu.edu/events/michigan-4-h-volunteer-webinar-series-fueling-or-squashing-the-rumor-mill-7pm)

### May 15: Adulting 101 Webinar – Stay Safe Out There

Online

Practical strategies to help you stay aware, prepared and confident, no matter where you go.

[www.canr.msu.edu/events/staysafe](http://www.canr.msu.edu/events/staysafe)

### May 19: Michigan 4-H Volunteer Webinar Series: Engaging Parents in 4-H Experiences

Online

Discover strategies to engage parents and implement shared leadership in your 4-H club.

12 p.m. session: [www.canr.msu.edu/events/michigan-4-h-volunteer-webinar-series-engaging-parents-in-4-h-experiences-and-implement-shared-leadership-in-4-h-clubs-noon](http://www.canr.msu.edu/events/michigan-4-h-volunteer-webinar-series-engaging-parents-in-4-h-experiences-and-implement-shared-leadership-in-4-h-clubs-noon)

7 p.m. session: [www.canr.msu.edu/events/michigan-4-h-volunteer-webinar-series-engaging-parents-in-4-h-experiences-and-implement-shared-leadership-in-4-h-clubs-7pm](http://www.canr.msu.edu/events/michigan-4-h-volunteer-webinar-series-engaging-parents-in-4-h-experiences-and-implement-shared-leadership-in-4-h-clubs-7pm)

### May 21: Make the Most of Your Market Animal Project Webinar – Market Mastery

Online

Delve into the 5 Ps of marketing and explore innovative strategies to elevate your outreach. Learn practical tools and techniques to promote projects successfully, enhance sales, and build valuable connections in the industry.

[www.canr.msu.edu/events/market-animal-project-webinar-5-21](http://www.canr.msu.edu/events/market-animal-project-webinar-5-21)





# STATEWIDE 4-H NEWS

## Michigan 4-H license plate now available!

Michigan drivers have a new way to show their 4-H pride while supporting 4-H youth development programming: through the purchase of the newly released Michigan 4-H license plate. Available at the Michigan Secretary of State, the plate prominently displays the signature 4-H clover and part of the proceeds from every sale and renewal will go to support Michigan 4-H youth.

“We are elated that the Michigan 4-H license plate is officially here,” said Quentin Tyler, director of Michigan State University Extension, which is home to the Michigan 4-H program. “We hope the many members of our Michigan 4-H community – youth, parents, alumni and supporters – will consider supporting 4-H by purchasing a plate as they renew their licenses this year.”



Similar to other special cause fundraising license plates in the state, the Michigan 4-H license plate will cost \$35, with \$25 of the purchase fee benefiting Michigan 4-H Youth Development. A \$10 fee will also be charged to benefit Michigan 4-H when the plate is renewed. License plates may be ordered by visiting [Michigan.gov/sos](http://Michigan.gov/sos), by mailing in a form or scheduling a visit to any Secretary of State office. The plate will be delivered by mail in two to three weeks.

To learn more, visit [extension.msu.edu/4-HPlate](http://extension.msu.edu/4-HPlate).

## Michigan 4-H Foundation opens 2024-25 grant cycle

Awarded annually, the Michigan 4-H Foundation recently opened their grant and award opportunities for the 2025-2026 season. Open to 4-H volunteer leaders, members and staff, the grants and awards support local 4-H clubs and county programs. **All applications are due June 1.**

“County 4-H programs and clubs have so many unique programs,” said Abbey Miller, director of the Michigan 4-H Foundation. “Thanks to the support of our generous 4-H donor community, we are pleased to offer mini-grants to support these many wonderful programs.”



Opportunities include:

- **Michigan 4-H Legacy Grants of \$1,000.** These grants are awarded to support development of a new program or initiative or to strengthen, enhance or expand a current program that is making a difference.
- **4-H On-Target Grants of \$500.** These grants support 4-H Shooting Sports programs to enhance existing programs, develop a new program or offer a special experience related to 4-H Shooting Sports.
- **The Collins 4-H Youth Horticulture Grant of \$500.** This grant is available only to 4-H youth clubs and supports advancement of club work in plant science and horticulture activities.
- **4-H Educational Garden Grants of \$1,000.** These grants support the creation of local 4-H educational gardens in Michigan.

Learn more or apply online at <http://mi4hfdtn.org/grants>. Questions? Contact the Michigan 4-H Foundation at 517-353-6692.

# JACKSON COUNTY 4-H CLOVERBUDS

JOIN THE FUN!!

- \*JANUARY 7TH - DREAM CATCHER
- \*FEBUARY 4TH - CANVAS PAINTING
- \*MARCH 4TH - CHEF CLOVERBUD
- \*APRIL 1ST- COUNCIL NIGHT
- \*MAY 6TH - DAHLEM CENTER
- \*JUNE 3RD- GARDENING

OPEN TO ALL  
JACKSON COUNTY 4-H  
MEMBERS 5-7 YRS OLD  
FOR MORE INFO  
PLEASE CONTACT  
JESSICA WALDRON AT  
517-788-4292 OR  
WALDRO45@MSU.EDU

ALL ACTIVIES ARE  
FROM 6-7:30PM  
COST \$7 PER ACTIVITY  
MSU EXTENSION OFFICE  
1715 LANSING AVE  
STE 257  
JACKSON, MI 49202



REGISTER AT:  
**WALDRO45@MSU.EDU**  
BY THE FRIDAY  
BEFORE EACH CLASS

MSU is an affirmative-action, equal-opportunity employer, committed to achieving excellence through a diverse workforce and inclusive culture that encourages all people to reach their full potential. Michigan State University Extension programs and materials are open to all without regard to race, color, national origin, gender, gender identity, religion, age, height, weight, disability, political beliefs, sexual orientation, marital status, family status or veteran status. Issued in furtherance of MSU Extension work, acts of May 8 and June 30, 1914, in cooperation with the U.S. Department of Agriculture. Quentin Tyler, Director, MSU Extension, East Lansing, MI 48824. This information is for educational purposes only. Reference to commercial products or trade names does not imply endorsement by MSU Extension or bias against those not mentioned.

